

Marblehead Little Theatre

12 School Street
Marblehead, Massachusetts

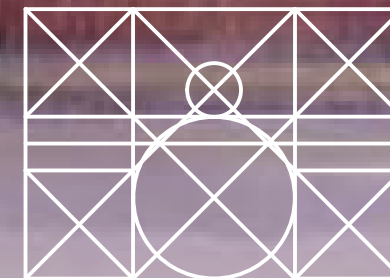
Firehouse Renovations

Berner Architects

Addendum # 31 December 2010

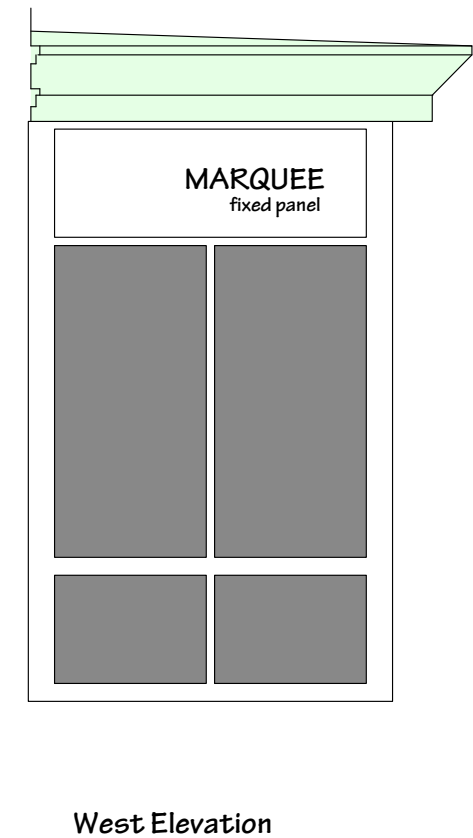
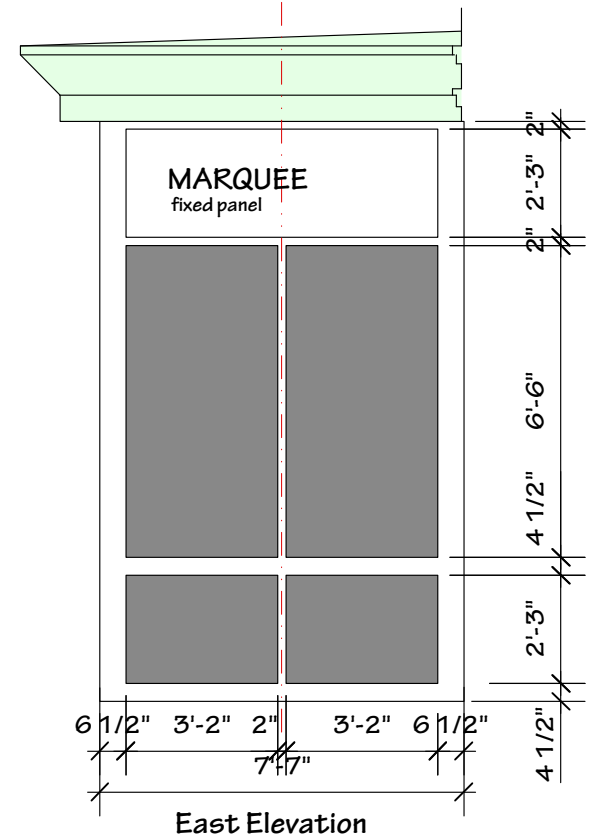
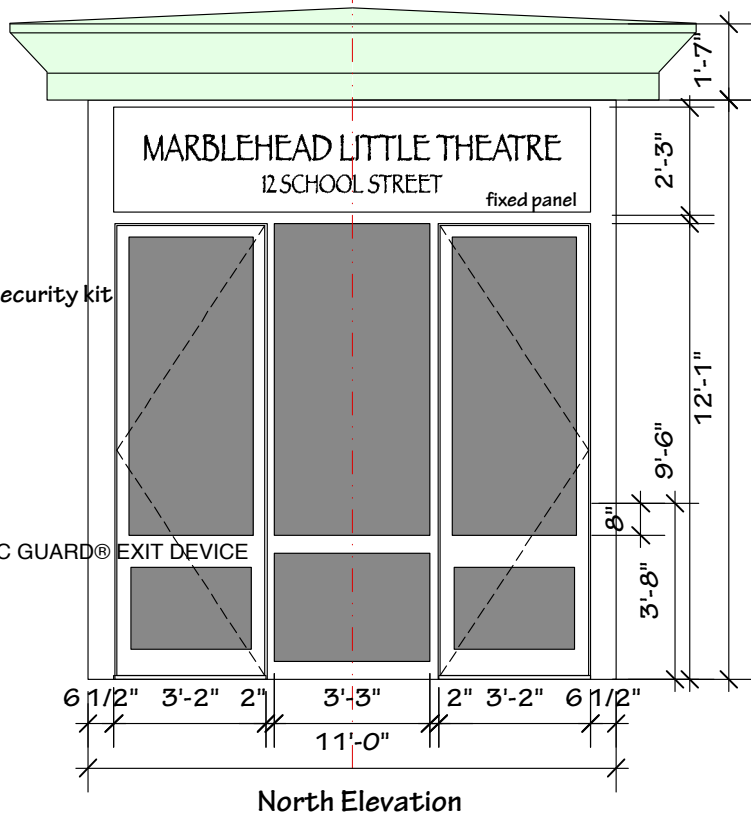
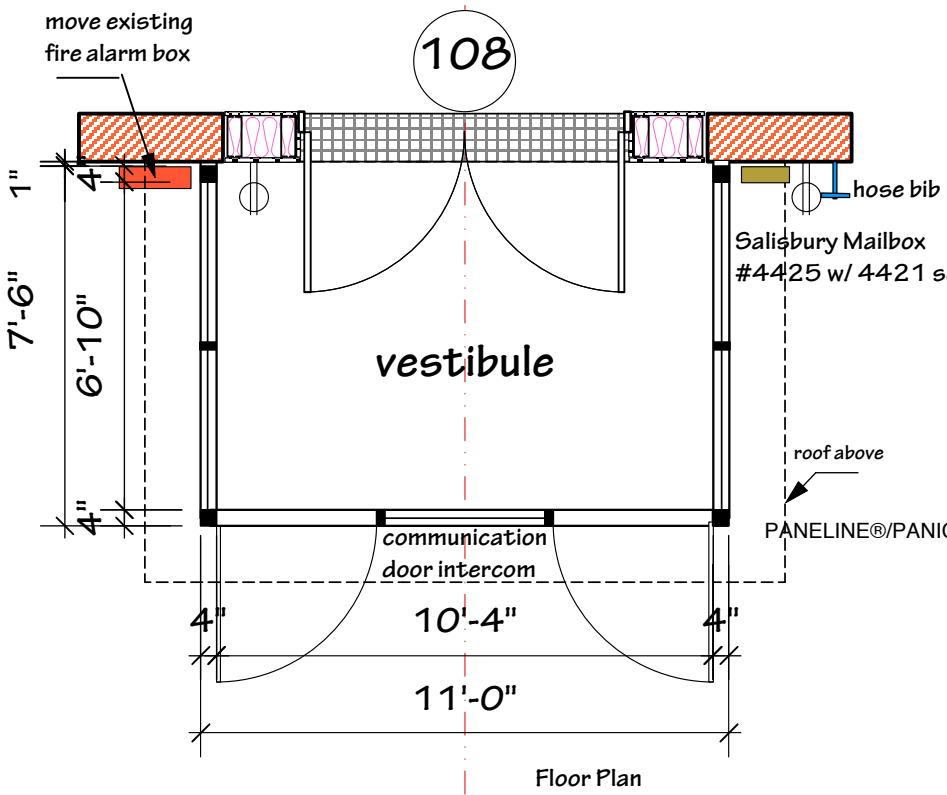
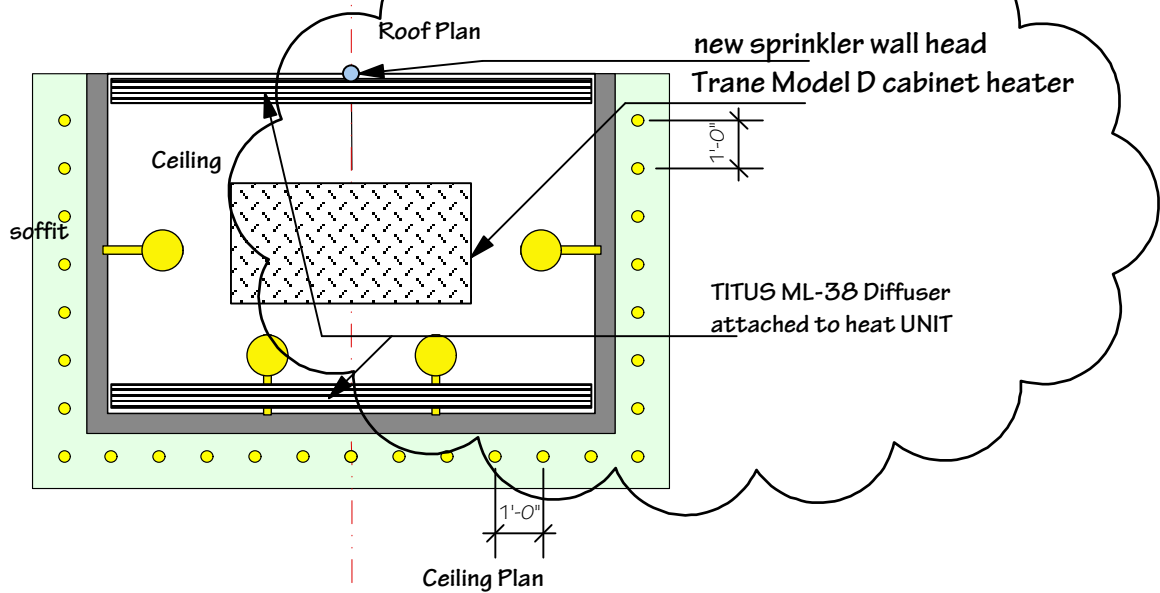
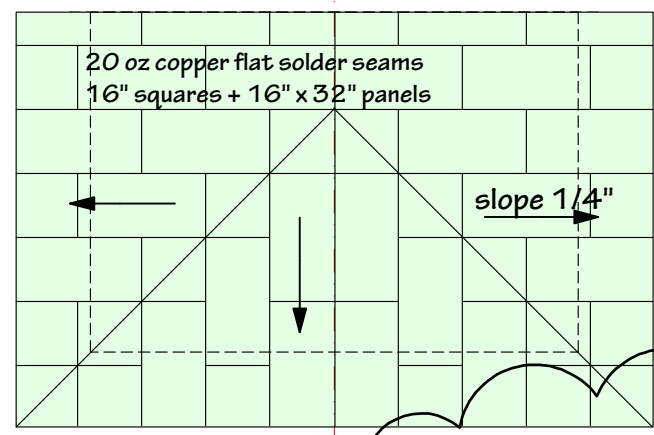
VESTIBULE DOCUMENTS

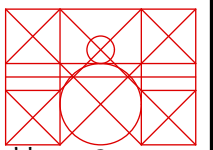
14 DECEMBER 2010

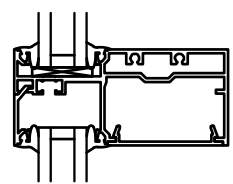


COPYRIGHT 2010 BERNER ARCHITECTS

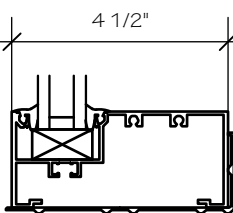
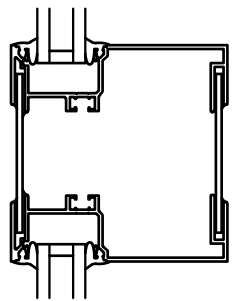
The design of this building is the exclusive property of Berner Architects and the use of these plans without their written permission is prohibited.



<p>MARBLEHEAD LITTLE THEATRE OLD FIREHOUSE: NEW VESTIBULE</p> <p>12 SCHOOL STREET MARBLEHEAD, MASSACHUSETTS 01945</p>	<p>DATE: 14 December 2010</p>
	<p>SCALE:</p>
<p>Vestibule</p> <p><small>COPYRIGHT 2010 BERNER ARCHITECTS The design of this building is the exclusive property of Berner Architects and the use of these plans without their written permission is prohibited.</small></p> <p>Office: 508• 997• 4420 Mobile: 781• 367• 9428</p>  <p>drberner@mac.com</p> <p>BERNER ARCHITECTS 8 POND STREET MARBLEHEAD MA 01945</p>	<p>DRAWN BY: DRB</p>
	<p>CHECKED BY: DRB</p>

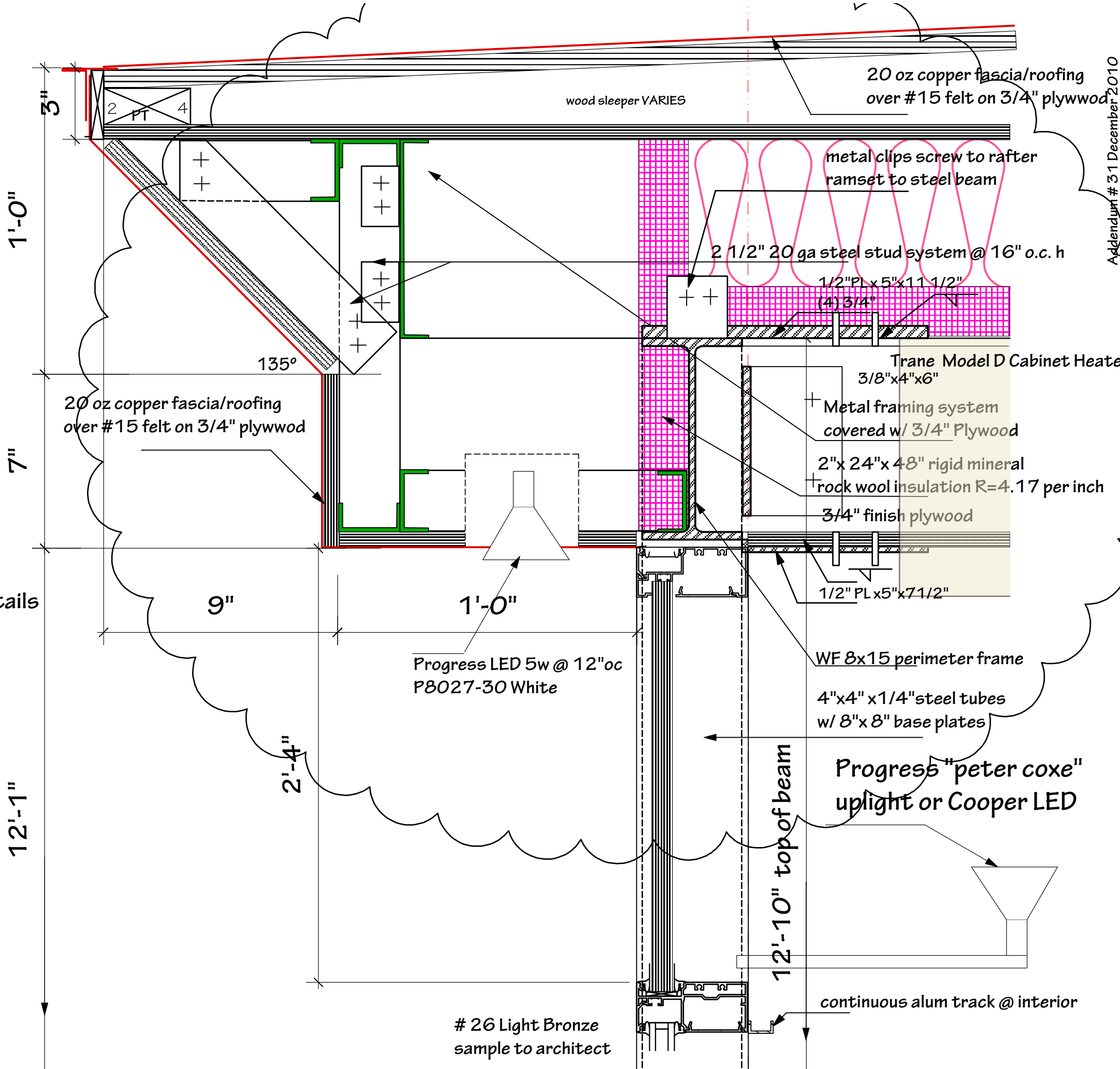


OUTSIDE GLAZING STANDARD



Kawneer VG 451T Trifab System Details
3" = 1'-0"

Match existing copper header
see architect now



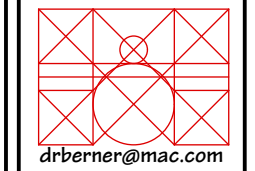
Addendum # 31 December 2010

DATE:	14 December 2010
SCALE:	
DRAWN BY:	DRB
CHECKED BY:	DRB

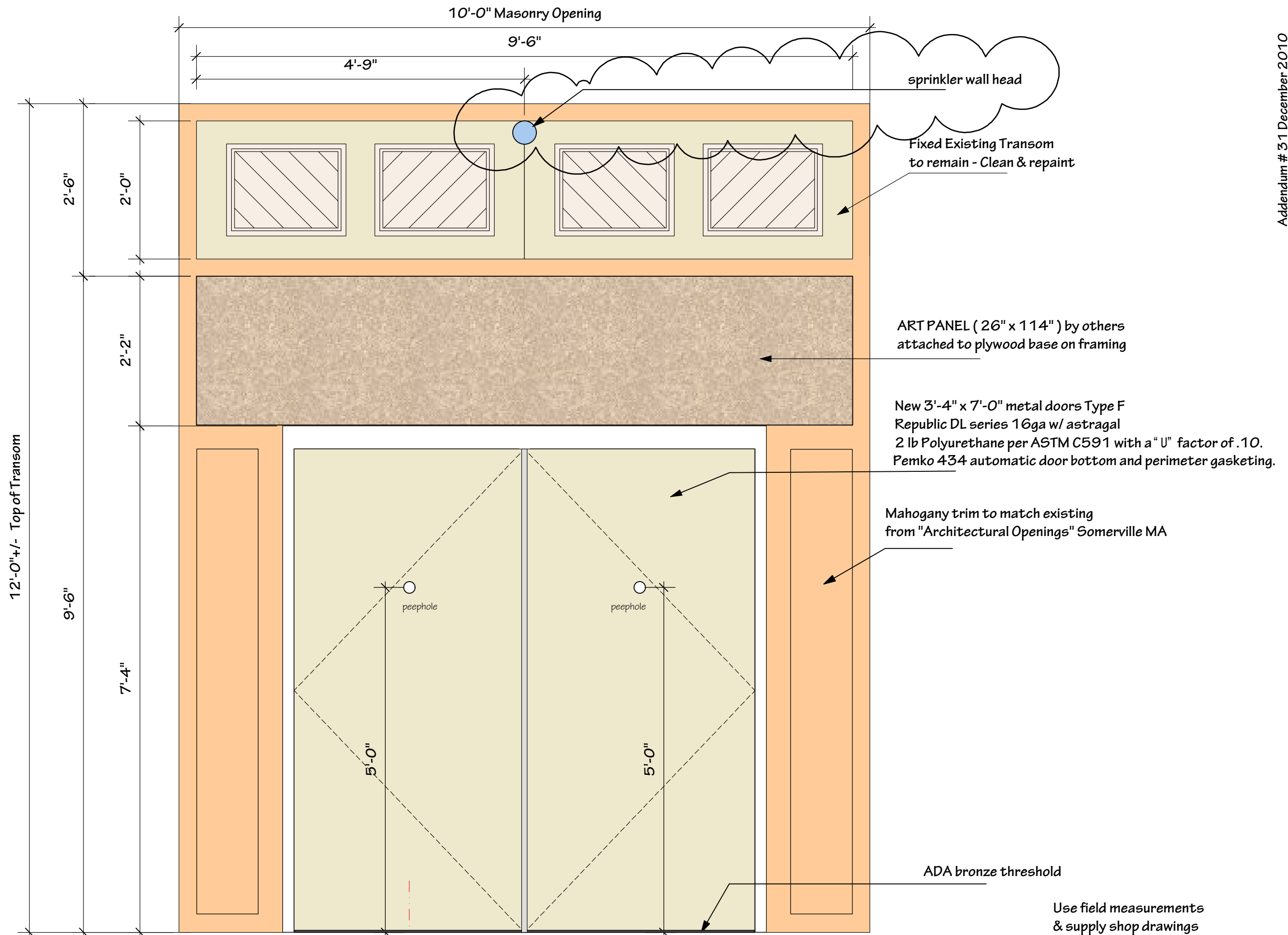
MARBLEHEAD INTL THEATRE
OLD FIREHOUSE: NEW VESTIBULE
 12 SCHOOL STREET
 MARBLEHEAD, MASSACHUSETTS 01945

Vestibule Details
 COPYRIGHT 2010 BERNER ARCHITECTS
 The design of this building is the exclusive property of Berner Architects and the use of these plans without their written permission is prohibited.

Office: 508• 997• 4420
 Mobile: 781• 367• 9428

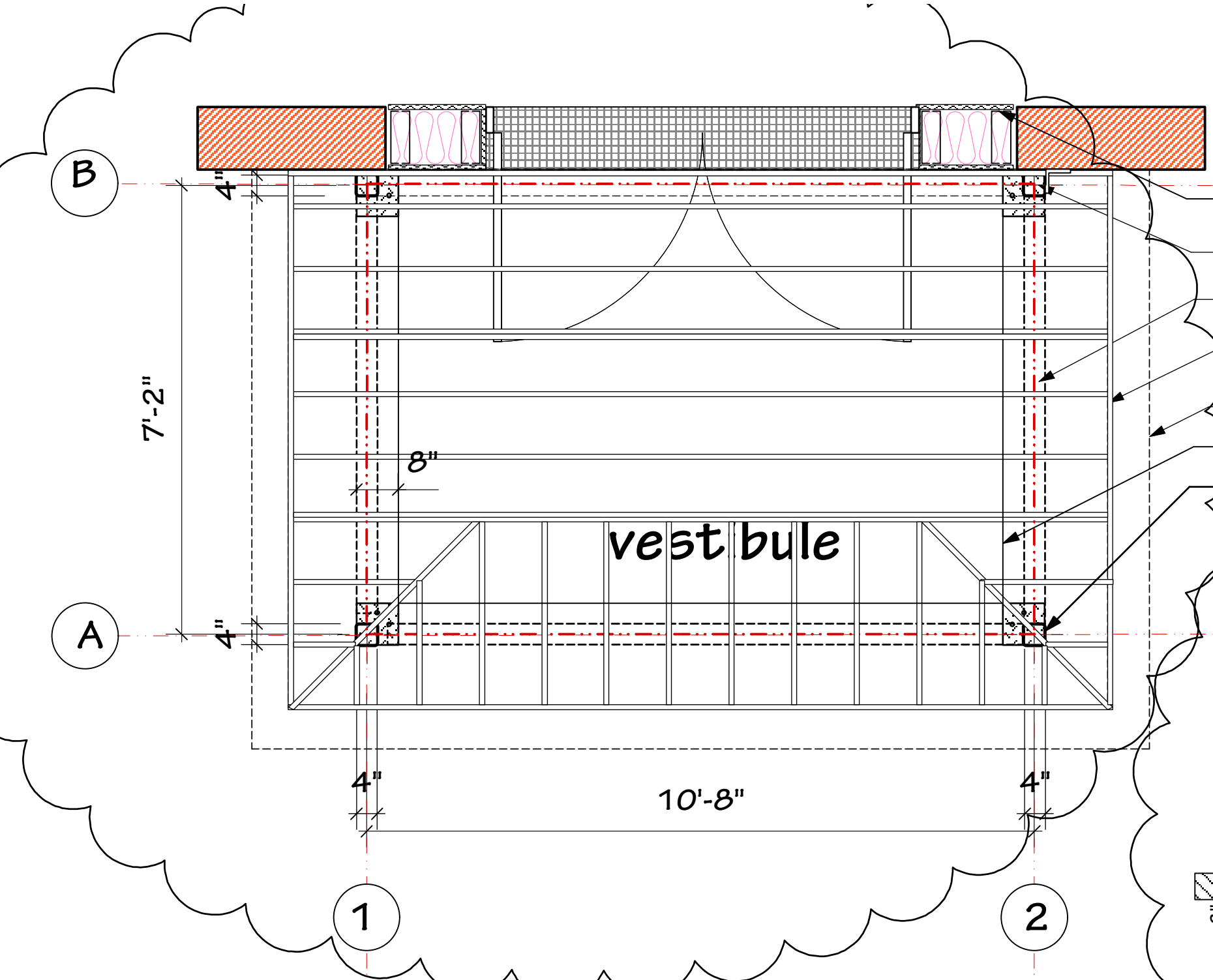


BERNER ARCHITECTS
 8 POND STREET
 MARBLEHEAD MA
 01945



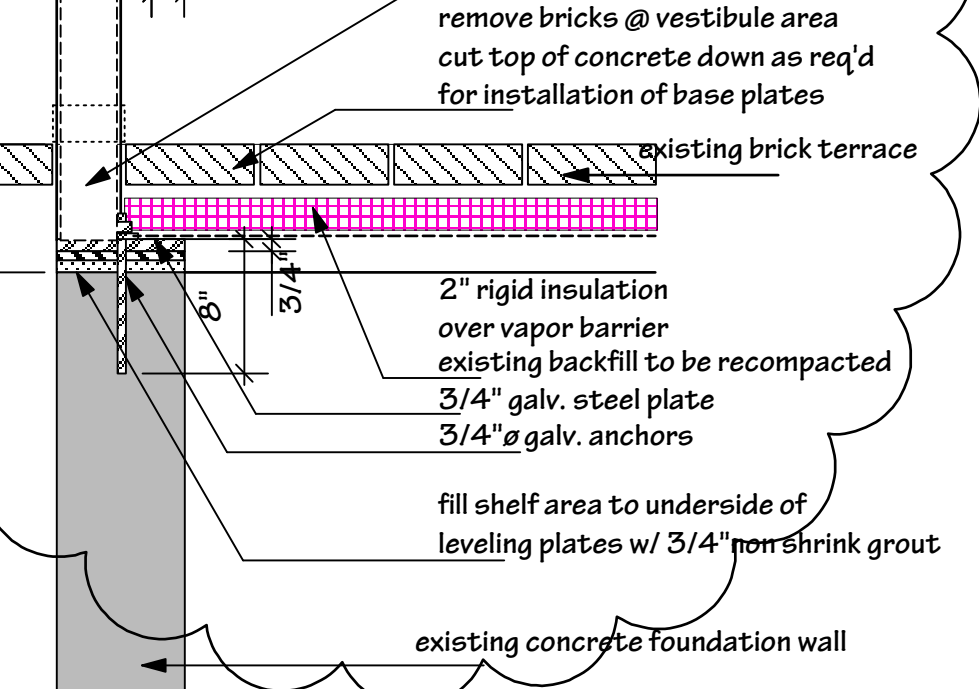
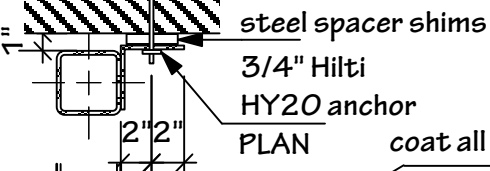
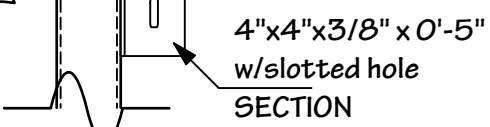
Addendum # 31 December 2010

MARBLEHEAD LITTLE THEATRE OLD FIREHOUSE: NEW VESTIBULE	DATE: 3/4" = 1'-0" 14 December 2010	DRAWN BY: DRB
	SCALE:	CHECKED BY: DRB
12 SCHOOL STREET MARBLEHEAD, MASSACHUSETTS 01945		
Vestibule Interior Doors <small>COPYRIGHT 2010 BERNER ARCHITECTS The design of this building is the exclusive property of Berner Architects and the use of these plans without their written permission is prohibited.</small>	Office: 508• 997• 4420 Mobile: 781• 367• 9428	
 drberner@mac.com BERNER ARCHITECTS 8 POND STREET MARBLEHEAD MA 01945		



- 2"x 24"x 48" rigid mineral rock wool insulation R=4.17 per inch
- Mahogany trim to match existing from "Architectural Openings" Somerville MA
- 4x4 steel tubes w/ 8"x8" x 3/4" base plate & clip angle to bldg w/ epoxy bolt
- WF 8x15 perimeter frame
- 8" 18 GA metal roof rafters @ 12" oc support heating unit (218 lbs) roof above
- existing 8" concrete foundation

Provide moment connections @ Columns A1 & A2



COLUMN BASE DETAILS

Addendum # 31 December 2010

MARBLEHEAD LITTLE THEATRE OLD FIREHOUSE: NEW VESTIBULE	DATE: 14 December 2010	DRAWN BY: DRB	CHECKED BY: DRB
	SCALE:		
12 SCHOOL STREET MARBLEHEAD, MASSACHUSETTS 01945	COPYRIGHT 2010 BERNER ARCHITECTS The design of this building is the exclusive property of Berner Architects and the use of these plans without their written permission is prohibited.		
Vestibule Structure	Office: 508• 997• 4420		
Berner Architects 8 POND STREET MARBLEHEAD MA 01945	Mobile: 781• 367• 9428	drberner@mac.com	